



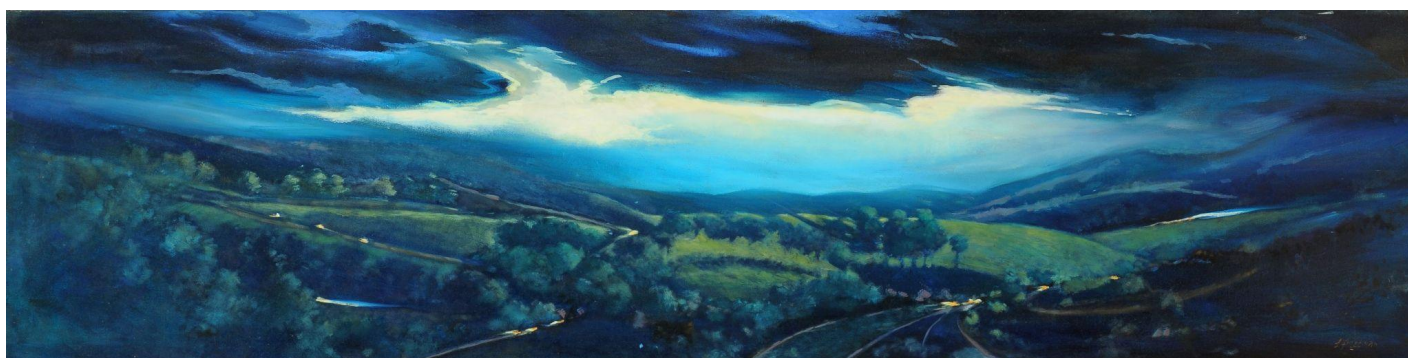
**FOR IMMEDIATE RELEASE**

March 15, 2023

**CONTACT**

Emily Gaynor Porto, Marketing Director  
marketing@woodstockart.org

**The Woodstock Artists Association & Museum Announces**  
***FOCUS: Alpine & Riverine***  
**April 21–June 4, 2023**  
**Opening Reception: Saturday, April 22, 4-6pm**



(Woodstock, NY) – The Woodstock Artists Association & Museum is pleased to announce *FOCUS: Alpine & Riverine*, on view from April 21 through June 4, 2023 in the Main Gallery. This group exhibition includes work by ten artists and was juried by curator and scholar William L. Coleman, Ph.D. WAAM will host a public reception to celebrate the opening of a new round of exhibitions on Saturday, April 22 from 4–6pm.

*Alpine & Riverine* includes paintings, photographs, and prints by contemporary artists who draw on the rich history of the Woodstock region to create work that engages with the natural world. The work is formally diverse, and taken as a whole, the presentation provides fresh insight into the fragility of the natural ecosystems that surround us while also offering new inspiration in a time of climate crisis.

**EXHIBITING ARTISTS**

Youye Chu  
Elizabeth DiPalma  
Mary Elwyn  
Lynne Friedman  
Mary Katz

Iain Machell  
Thomas Sarrantonio  
Amy Silberkleit  
Pamela Wallace  
jd weiss

## **ABOUT THE JUROR**

William L. Coleman, Ph.D. is a curator and scholar specializing in landscape art across the centuries and the inaugural Wyeth Foundation Curator and Director of the Andrew & Betsy Wyeth Study Center, based at the Brandywine Museum of Art in Chadds Ford, PA with additional oversight of Wyeth Foundation initiatives at the Farnsworth Art Museum in Rockland, ME. Coleman was formerly Director of Collections & Exhibitions at Olana, where he led numerous complex conservation, acquisition, and exhibition projects, including the current show *Chasing Icebergs: Art and a Disappearing Landscape*, open through March, and *Terraforming: Olana's Historic Photography Collection Unearthed* in collaboration with the artist David Hartt, opening in May of this year.

Coleman was previously Associate Curator of American Art at the Newark Museum of Art, taught at Washington University in St. Louis and U.C. Berkeley, and has held long-term research fellowships from the Smithsonian Institution and the National Endowment for the Humanities. Previous juror appointments include the Salmagundi Club, the Sir Denis Mahon Foundation, and the Society of Architectural Historians. He has published a variety of essays, exhibition catalogues, and edited volumes on art, architecture, and music.

## **PUBLIC PROGRAMS**

### **Opening Reception**

**Saturday, April 22 | 4-6pm**

WAAM will hold an opening reception, open to the public, to celebrate a new round of exhibitions on view throughout its galleries.

##

## **Woodstock Artists Association & Museum**

Founded in 1919, the Woodstock Artists Association & Museum (WAAM) is a not-for-profit membership organization featuring an historic Permanent Collection of regional art exhibited in the Towbin Wing, three contemporary art galleries, a dynamic Education Program and an Archives of materials associated with artists of the Woodstock region.

### **General Information**

The Woodstock Artists Association & Museum (WAAM) is located at 28 Tinker Street, Woodstock, NY. Gallery hours are Thursday thru Sunday from noon-5pm. WAAM is closed during major holidays. For general information please call: 845.679.2940 or visit our website at: [woodstockart.org](http://woodstockart.org).

Image: Lynne Friedman, *Woodstock Dusk and Orchards*, 2022, Oil on canvas, 18" x 72" x 2".