

EXHIBITION CHECKLIST

11. **Nils Hill**
RC-IV
powdered pigment and acrylic on panel
16 x 16 inches
\$1,800
12. **Nils Hill**
RC-I
powdered pigment and acrylic on panel
30 x 30 inches
\$3,000
13. **Nils Hill**
RC-II
powdered pigment and acrylic on panel
30 x 30 inches
\$3,000
14. **Nils Hill**
RC-III
powdered pigment and acrylic on panel
30 x 30 inches
\$3,000
15. **Samantha Palmeri**
Ladyfingers
oil on canvas
40 x 40 inches
\$1,350
16. **Samantha Palmeri**
Save me from my desires
oil on canvas
58 x 58 inches
\$3,000
17. **Kat Stoutenborough**
rush
fabric, metal
10 x 36 inches
\$300
18. **Stephen Rose**
Your Wounds Become Rosés
oil on canvas
60 x 48 inches
\$2,000
19. **Stephen Rose**
Untitled, 1/18
oil on canvas
30 x 40 inches
\$1,500
20. **Stephen Rose**
Nature Morte
oil on canvas
40 x 30 inches
\$1,500
21. **Jerry Michalak**
Waterfall: I Can Touch You
oil on linen
36 x 48 inches
\$1,100
22. **Jerry Michalak**
Waterfall: Standing Tall
oil on linen
40 x 30 inches
\$950
23. **Henry Klimowicz**
K's in Space
cardboard
24 x 24 inches
\$6,000
24. **Henry Klimowicz**
Standing Liken Lichen #3
cardboard
40 x 30 x 30 inches
\$6,000
25. **Henry Klimowicz**
Mat #3
cardboard
96 x 54 inches
\$10,000
26. **Jerry Michalak**
Waterfall: I Hear Your Sound
oil on linen
40 x 30 inches
\$950
27. **Barbara Smith Gioia**
Finding One Another
collage painting
24 x 24 inches
\$2,400
28. **Barbara Smith Gioia**
Perfect Fit
collage painting
24 x 24 inches
\$2,400
29. **Barbara Smith Gioia**
The River
collage painting
24 x 24 inches
\$2,400
30. **Barbara Smith Gioia**
Real Love
monotype and silkscreen collage
36 x 36 inches
\$2,600
31. **Barbara Smith Gioia**
Entangled
monotype and acrylic on canvas
20 x 20 inches
\$900
32. **jd weiss**
repetition of change
archival pigment print on panel
20 x 20 inches
\$600
33. **jd weiss**
river graphics
archival pigment print on panel
20 x 20 inches
\$600
34. **jd weiss**
water dance
archival pigment print on panel
20 x 20 inches
\$600
35. **jd weiss**
when time passes at the lake
archival pigment print on panel
20 x 20 inches
\$600
36. **jd weiss**
seeing water
archival pigment print on panel
20 x 20 inches
\$600
37. **Paulette Esrig**
I Remember Those I Never Met
stoneware
11h x 5w x 5d inches
\$800
38. **Paulette Esrig**
The Embrace
stoneware
10h x 5w x 5d inches
\$800
39. **Paulette Esrig**
I Still Dream I'm Dancing
stoneware
12h x 4w x 5d inches
\$800
40. **Paulette Esrig**
I Dance Alone
stoneware
13h x 6w x 5d inches
\$800
41. **Paulette Esrig**
Dance at Dawn
stoneware
13h x 5w x 5d inches
\$800
42. **Paulette Esrig**
Give Me Sound So That I May Hear
stoneware
11h x 6w x 4d inches
\$800
43. **Paulette Esrig**
A Time to Dance
stoneware
12h x 6w x 6d inches
\$800

WAAM



Samantha Palmeri, *Meadow*, oil on canvas, 36 x 36 inches

FOCUS ▶
Abstract Heart

March 17 - April 29, 2018

Juror, Katie Schmidt Feder

Gallery Talk Friday, March 23, 5 PM
with Katie Schmidt Feder and Carl Van Brunt

Exhibiting Artists:

Paulette Esrig
Nils Hill
Henry Klimowicz
Jerry Michalak
Samantha Palmeri
Tracy Phillips
Stephen Rose
Barbara Smith Gioia
Kat Stoutenborough
jd weiss



Images (from top):

Kat Stoutenborough, *undone*, fabric, metal, light fixture, 39 x 82 inches
 Nils Hill, *RC-I*, powdered pigment and acrylic on panel, 30 x 30 inches
 Paulette Esrig, *The Embrace*, stoneware, 10h x 5w x 5d inches

FOCUS: Abstract Heart

Juried by Katie Schmidt Feder
 Director Garrison Art Center

I am so honored to be invited to serve as a juror for this FOCUS exhibition entitled *Abstract Heart*.

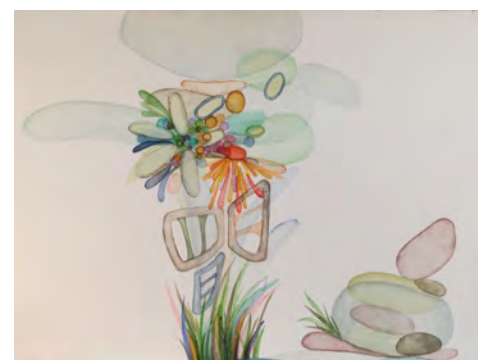
When considering the theme *Abstract Heart*, I think about the things that resonate the most with my own heart: motherhood; the masculine energies in my life; the importance of nature for reflection, inspiration and relaxation; our homes and the clothing and belongings that give texture to our lives; the way color can create a feeling or awaken a memory; the importance of music, movement & dance; moments we are contemplative or deal with grief or depression; moments we are free to be silly and full of whimsy, moments of uncertainty and fear. I also try to be aware of the emotions we sometimes misinterpret or project upon others and how we need to be patient and let others reveal themselves to us.

I had a visceral response to the work of the ten artists chosen for this exhibition. Each offered a strong and diverse point of view which speaks to one or many facets of emotion and human experience. It could very well be that the thoughts or emotions behind the creation of these works is not at all the same thoughts or emotions which entered my mind upon experiencing the work - but that is the power, wonder and gift of art.

Katie Schmidt Feder
 March 2018



Barbara Smith Gioia
Finding One Another
 collage painting
 24 x 24 inches



Images (clockwise from top left):

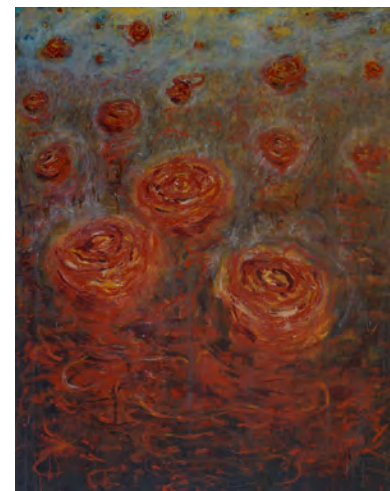
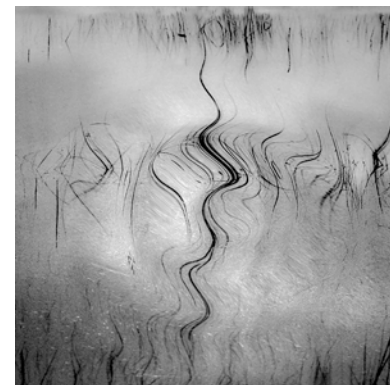
Henry Klimowicz
Standing Lichen #3
 cardboard, 40 x 30 x 30 inches

Jerry Michalak
Waterfall: I Hear Your Sound
 oil on linen, 40 x 30 inches

jd weiss
water dance
 archival pigment print on panel, 20 x 20 inches

Stephen Rose
Your Wounds Become Roses
 oil on canvas, 60 x 48 inches

Tracy Phillips
all dressed up
 watercolor on paper, 7 x 10 inches



EXHIBITION CHECKLIST

(Continued on back)

1. **Tracy Phillips**
balancing act
 watercolor on paper
 4 x 6 inches
 \$225
2. **Tracy Phillips**
king of the hill
 watercolor on paper
 4 x 6 inches
 \$225
3. **Tracy Phillips**
tipping point
 watercolor on paper
 7 x 10 inches
 \$425
4. **Tracy Phillips**
the burden
 watercolor on paper
 7 x 7 inches
 \$325
5. **Tracy Phillips**
under the microscope
 watercolor on paper
 6 x 6 inches
 \$300
6. **Tracy Phillips**
all dressed up
 watercolor on paper
 7 x 10 inches
 \$425
7. **Tracy Phillips**
crevices
 watercolor on paper
 4 x 6 inches
 \$225
8. **Samantha Palmeri**
Meadow
 oil on canvas
 36 x 36 inches
 \$1,100
9. **Kat Stoutenborough**
undone
 fabric, metal, light fixture
 39 x 82 inches
 \$1,200
10. **Kat Stoutenborough**
release
 fabric, wood
 23 x 72 inches
 \$800