



Konrad Cramer (1888-1963)
Deserted Barn, c. 1940-50
silver gelatin print
Woodstock Artists Association
& Museum, Gift of Howard and
Ellen Greenberg
2010-13-29

Konrad Cramer (1888-1963)
Untitled (Tree Abstraction),
c. 1950
silver gelatin print
Woodstock Artists Association
& Museum, Gift of Howard and
Ellen Greenberg
2010-13-85

Konrad Cramer (1888-1963)
Landscape with Figures, 1935
lithograph and chine collé
Woodstock Artists Association
& Museum, Gift of Mr. and Mrs.
Karl Fortess
1974-24-02

Konrad Cramer (1888-1963)
Plant Abstraction, c. 1940-50
silver gelatin print
Woodstock Artists Association
& Museum, Gift of Howard and
Ellen Greenberg
2010-13-34

Konrad Cramer (1888-1963)
Untitled (Table Display),
c. 1940-50
silver gelatin print
Woodstock Artists Association
& Museum, Gift of Howard and
Ellen Greenberg
2010-13-76

Konrad Cramer (1888-1963)
Untitled (Figure Abstraction),
c. 1940-50
silver gelatin print
Woodstock Artists Association
& Museum, Gift of Howard and
Ellen Greenberg
2010-13-35

James Fee (1949-2006)
Mounting the Chains, Tuscany,
1997
gelatin silver halide print
On loan Center for Photography
at Woodstock - Permanent Print
Collection

Paul Fiene (1899-1949)
Owl, 1949
Scotch granite
Woodstock Artists Association
& Museum, Gift of the Estate of
Margaret Magdalena Enoch
2007-08-01

Karl Fortess (1907-1993)
(Storm Clouds), n.d.
charcoal, ink wash, pencil
Woodstock Artists Association
& Museum, Gift of the Estate of
Karl E. Fortess
1996-08-24

Mary Frank (born 1933)
Untitled (Amaryllis), 1978
etching and aquatint
Woodstock Artists Association &
Museum, Gift of Peter and Chaght
Heller
2003-09-01

Grace Greenwood (1902-1979)
Lamp Series, no. 1, 1976
acrylic on canvas
Woodstock Artists Association &
Museum, Gift of Irene and Sal
Sirugo
1999-07-02

Philip Guston (1913-1980)
Curtain, 1980
lithograph
Woodstock Artists Association
& Museum, Gift of Mr. and Mrs.
Karl Fortess
1988-04-02

Mary Hunt (1891-1979)
Floral, c. 1920
silver chloride print
Woodstock Artists Association
& Museum, Gift of Howard
Greenberg
1985-21-05

George Inness (1825-1894)
Montclair, New Jersey, 1885
oil on canvas
On loan Samuel Dorsky Museum
of Art State University of New
York, New Paltz. Gift of Elizabeth
Koppitz

Kate LiBretto
Country Road Take Me Home,
2013
silkscreen
On loan the Women's Studio
Workshop

Carl Eric Lindin (1869-1942)
Rainbow, 1906
oil on board
Woodstock Artists Association &
Museum, Gift of David and Heidi
Freilich
2011-05-03

Henry Mattson (1887-1971)
The Falls (aka Waterfall at Night),
n.d.
oil on canvas
Woodstock Artists Association
& Museum, Gift of Gregory E.
Lindin
2002-20-01

William J. Sewell (1901-1951)
The Great Fall, 1944
Lithograph
Woodstock Artists Association &
Museum, Gift of Tisanne Gardner
1999-14-04

Sal Sirugo (1920-2013)
Composition M-239, c. 1992
ink on paper
Woodstock Artists Association &
Museum, Gift of Carol Sirugo
1999-06-01

Judson Smith (1880-1962)
A Deserted Mill, 1931
oil on composite board
Woodstock Artists Association
& Museum, Gift of the family of
Judson Smith
1974-49-01

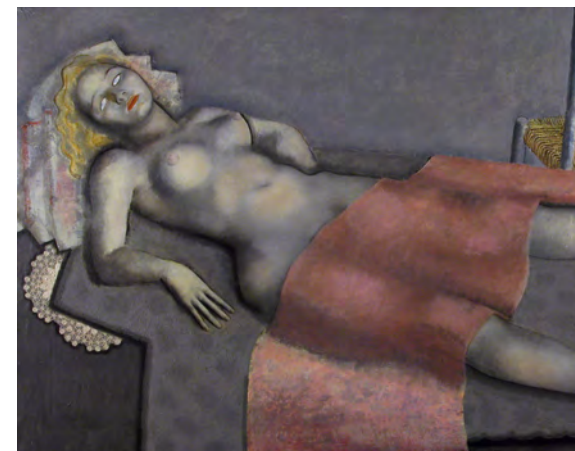
Theodoros Stamos (1922-1997)
Amulet, 1947
oil on board
On loan Samuel Dorsky Museum
of Art State University of New
York, New Paltz. Gift of Benjamin
Weiss

Sandra Turley (born 1950)
This Original Self, c. 2001
letterpress, devore silkscreen
print
Published by Women's Studio
Workshop

Reginald Wilson (1909-1993)
Dead Crow, c. 1935
lithograph
Woodstock Artists Association
& Museum, Gift of the Estate of
Karl E. Fortess
1994-01-13

Natalia Zapella
Night The Cosmos and I, 2015
silkscreen
Published by Women's Studio
Workshop

WAAM
Woodstock Artists Association & Museum
28 Tinker Street, Woodstock, NY 12498
www.woodstockart.org 845.679.2940



John Carroll (1892-1959), *Lilith II*, c. 1927, oil on canvas with collage,
Woodstock Artists Association & Museum, Gift of Murray Hoffman

PHOEBE & BELMONT TOWBIN WING

L'heure entre chien et loup

July 1 – Oct. 1, 2017

Gallery Talk: Sun. July 23, 2pm

Curated by Gregory Amenoff

Support for this exhibition
and gallery talk comes from the
New York State Council on the Arts
and the Milton & Sally Avery Foundation.



NYS CA

L'heure entre chien et loup



Images (top to bottom):

Konrad Cramer (1888-1963), *Landscape with figures*, 1935, lithograph and chine collé, Woodstock Artists Association & Museum, Gift of Mr. and Mrs. Karl Fortess

Paul Wesley Arndt (1881-1978), *Skull, Glass and Bottle*, 1936 oil on linen, Woodstock Artists Association & Museum, Gift of Evelyn Crawford Gluckman

The title of this exhibition harkens back to notions popularized by the Symbolist poets and painters in the late 19th century. The full expression is l'heure entre chien et loup as it refers to that time of day (we often call it the witching hour) between daylight and darkness. The hour between the dog and the wolf... a time of uncertainty when the visible world drifts into a confusing lack of clear legibility. It is an hour of transition and to my thinking has a parallel in the shift from the conscious mind to the unconscious mind. It is an hour of mystery and can also carry with it a feeling of expectation and even fear. The murky light of film noir utilizes this condition of light to great effect. The French poets, Baudelaire, Mallarmé and Rimbaud and the painters, Redon (his pastels and prints in particular), Moreau, and the Belgian painter Fernand Khnopff were all engaged with dreams, visions and the vivid powers of imagination.

Using the vast collections of the Hudson Valley Visual Art Collections Consortium I made a selection of prints, paintings and photography and a few objects that spoke to this condition of light hopefully evoking this magic hour. I should say that not all the art works overlap precisely with the ideas popular in the late 19th Century but all, to my eye, have a resonance beyond their various representations. Locating content in art works is an elusive undertaking...it can take a narrative form, a formal form based around composition or color to name a few but in my choices I favored work that relied on conditions of light and atmosphere to carry the 'message'. I hope the viewer will find places to dream, float and drift freely through these many works of art.

Gregory Amenoff, 2017

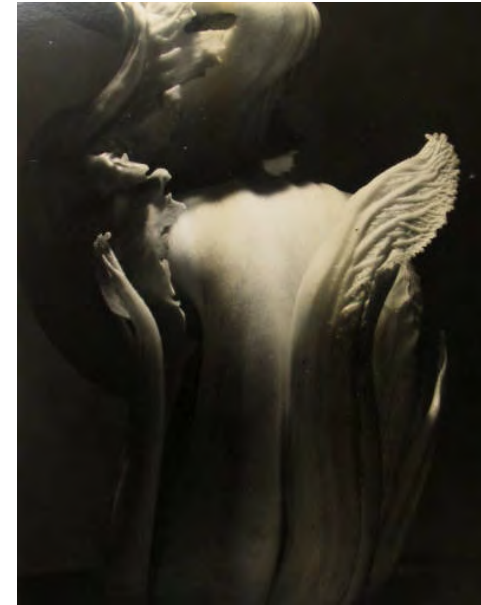


Images (clockwise from top left):

Reginald Wilson (1909-1993), *Dead Crow*, c. 1935, lithograph, Woodstock Artists Association & Museum, Gift of the Estate of Karl E. Fortess

Konrad Cramer (1888-1963), *Plant Abstraction*, c. 1940-50, silver gelatin print, Woodstock Artists Association & Museum, Gift of Howard and Ellen Greenberg

Grace Greenwood (1902-1979), *Lamp Series, no. 1*, 1976, acrylic on canvas, Woodstock Artists Association & Museum, Gift of Irene and Sal Sirugo



Gregory Amenoff is a painter who lives in New York City and Ulster County, New York. He is the recipient of numerous awards from organizations including the American Academy of Arts and Letters, National Endowment for the Arts, New York State Council on the Arts and the Tiffany Foundation. He has had over fifty one-person exhibitions in museums and galleries throughout the United States and Europe. His work is in the permanent collections of more than thirty museums, including the Whitney Museum of American Art, the Museum of Fine Arts in Boston, the Museum of Modern Art in New York and the Metropolitan Museum of Art. He served as President of the National Academy of Design from 2001-2005. He is a founding board member of the CUE Art Foundation and served as the CUE Art Foundation's Curator Governor from 2002 to 2015. Amenoff has taught at Columbia University for twenty years, where he holds the Eve and Herman Gelman Chair of Visual Arts. He served as Chair of the Visual Arts Division from 2007-2013. In 2011 he received the John Solomon Guggenheim Fellowship.

EXHIBITION CHECKLIST

(Continued on Back)

Paul Wesley Arndt (1881-1978)
Skull, Glass and Bottle, 1936
oil on linen
Woodstock Artists Association & Museum,
Gift of Evelyn Crawford Gluckman
1997-12-01

George Ault (1891-1948)
The Valley Lake: Autumn, 1919
oil on canvas
Woodstock Artists Association & Museum,
Gift of Lisa Wolven Tiano
1979-13-01

Milton Avery (1885-1965)
Dark Birds, Dark Sea, 1959
oil on canvasboard
Woodstock Artists Association & Museum,
Gift of Elliot and Ruth Gruenberg
1986-20-01

John Carroll (1892-1959)
Wild Orchids, 1929
oil on canvas
Woodstock Artists Association & Museum,
Transferred from the Schenectady Museum,
Gift of Dr. and Mrs. Donald Donaldson
2006-14-01

John Carroll (1892-1959)
Lilith II, c. 1927
oil on canvas with collage
Woodstock Artists Association & Museum,
Gift of Murray Hoffman
1974-07-02

Florence Ballin Cramer (1885-1962)
Light Through Branches, c. 1940s
silver gelatin print
Woodstock Artists Association & Museum,
Gift of Howard and Ellen Greenberg
2010-13-08

Konrad Cramer (1888-1963)
Untitled (Abstraction), c. 1940-50
silver gelatin print
Woodstock Artists Association & Museum,
Gift of Howard and Ellen Greenberg
2010-13-57

Konrad Cramer (1888-1963)
Abstraction, c. 1950
silver gelatin print
Woodstock Artists Association & Museum,
Gift of Howard and Ellen Greenberg
2010-13-82